

WATCHFUL

A black and white photograph of a vast, choppy ocean under a pale sky. A small, distant structure, possibly a lighthouse or navigational aid, is visible on the horizon.

Vessel Services Guide



Introduction

Watchful Ltd provides vessel services specifically designed to support commercial fishing vessels diversifying into other offshore commercial work. Fishing vessels are suited to work in areas near to and associated with the fisheries that they are experts in, especially where the projects of offshore developers interface with the areas where fishermen routinely work.

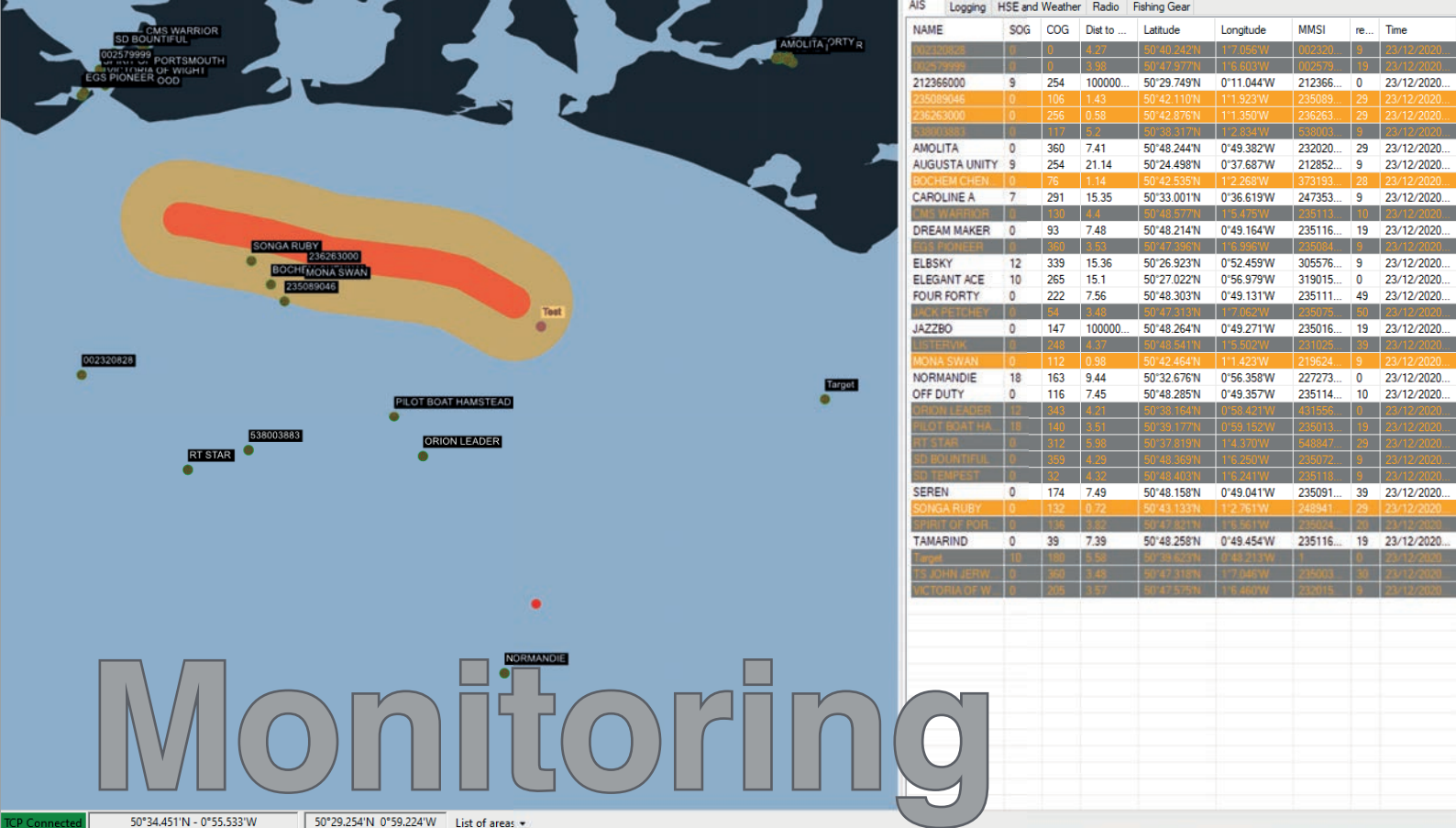
Our fisherman first approach is a tried and tested formula, and we have a proven history of developing solutions to suit your project needs.

Services are designed to support the fishing vessels and vessel services companies with the logistical and technical support required to deliver a first class service.

We provide a direct service to the client, customising our reports and software to ensure that we enhance your services, and maintain your reputation.

Our services are priced per vessel day, allowing you to reduce cost during quite periods. We offer non-compete and exclusive service agreements.





On site monitoring services allow for the collection of data necessary to meet the clients requirements, and ensuring that the data is accurate and purposeful.

On-board Software

The keystone of our service is our custom built software designed to easily collate the data feeds from the vessel and crew, and connecting live to our onshore databases and remote monitoring systems.

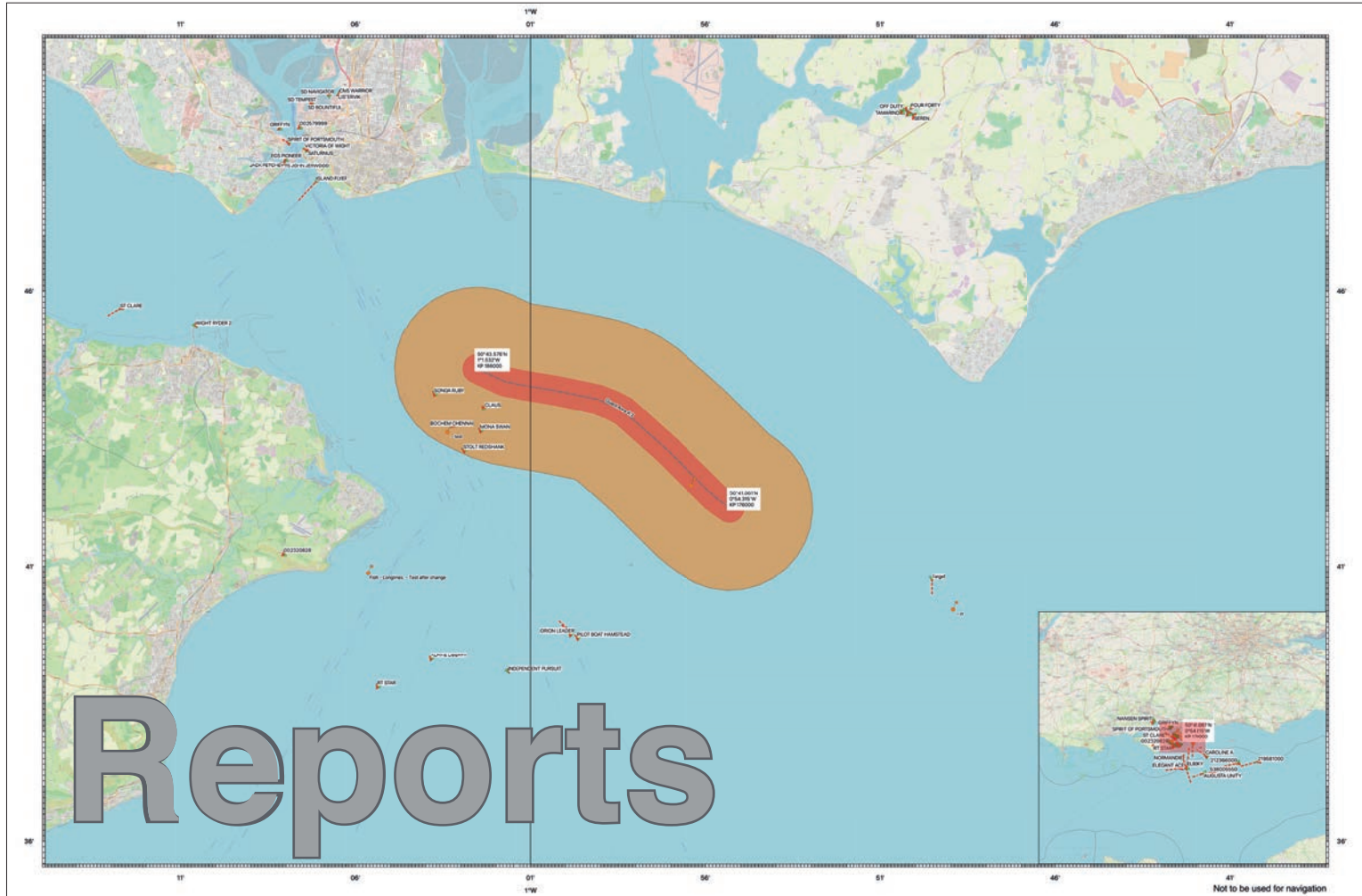
The onboard software is provided free of charge as part of our service.

The Watchful application is connected to the NMEA 0183 data feed of the vessel and links to the relevant onboard instruments.

Our software can be customised and branded to the needs of the project, and includes functionality for the following services:

- Asset protection and guarding
- Pre site investigation / Scouting
- Vessel traffic survey
- Wildlife survey

Entering data has never been so easy, accurate or intuitive, with our agile development process we can add features even mid project within a matter of hours, ensuring clients needs are always met.



Creating visual representation of data isn't just about making charts and reports, it also takes great care, thought and expert understanding to make large amounts of data understandable and relevant. Our team are experienced in many aspects of vessel services, and have a range of land based and maritime qualifications. You can be sure that data is being properly interpreted and presented.

Our routine reports include:

- Daily vessel reports
- Vessel / asset incident reports
- Periodic project reviews
- Future planing
- Notice to Mariners
- Nautical Charts with heat-maps and overlayed data

When building our reports our experienced team check all aspects of the data from the datum referencing points, navigational constraints, to the legal compliance of the vessels involved. Our team include qualified, certificated officers with experience of legal expert witness process and data preparation.

Health & Safety

Maintaining highest standards of health and safety is essential and requires diligence, monitoring and constant maintenance. Our team have experience and expertise in national and international legislation, including qualifications in health and safety onshore and at sea. Our health and safety support includes a complete ISM compliant package designed per client with the following vessel and project specific managed documents:

- Safety Management Manual
- Safety Training Manual
- Safety Folder (Risk Assessments and Policies)
- Emergency Towing Manual
- Ship Oil Pollution Emergency Plan

Legal Compliance

Understanding legislation as applicable nationally and internationally can seem daunting, but our team are well versed in understanding complex legal situations and develop innovative ways to achieve compliance. When advising vessels or clients on legal compliance we check all aspects of relevant legislation from International, national and regulatory sources.

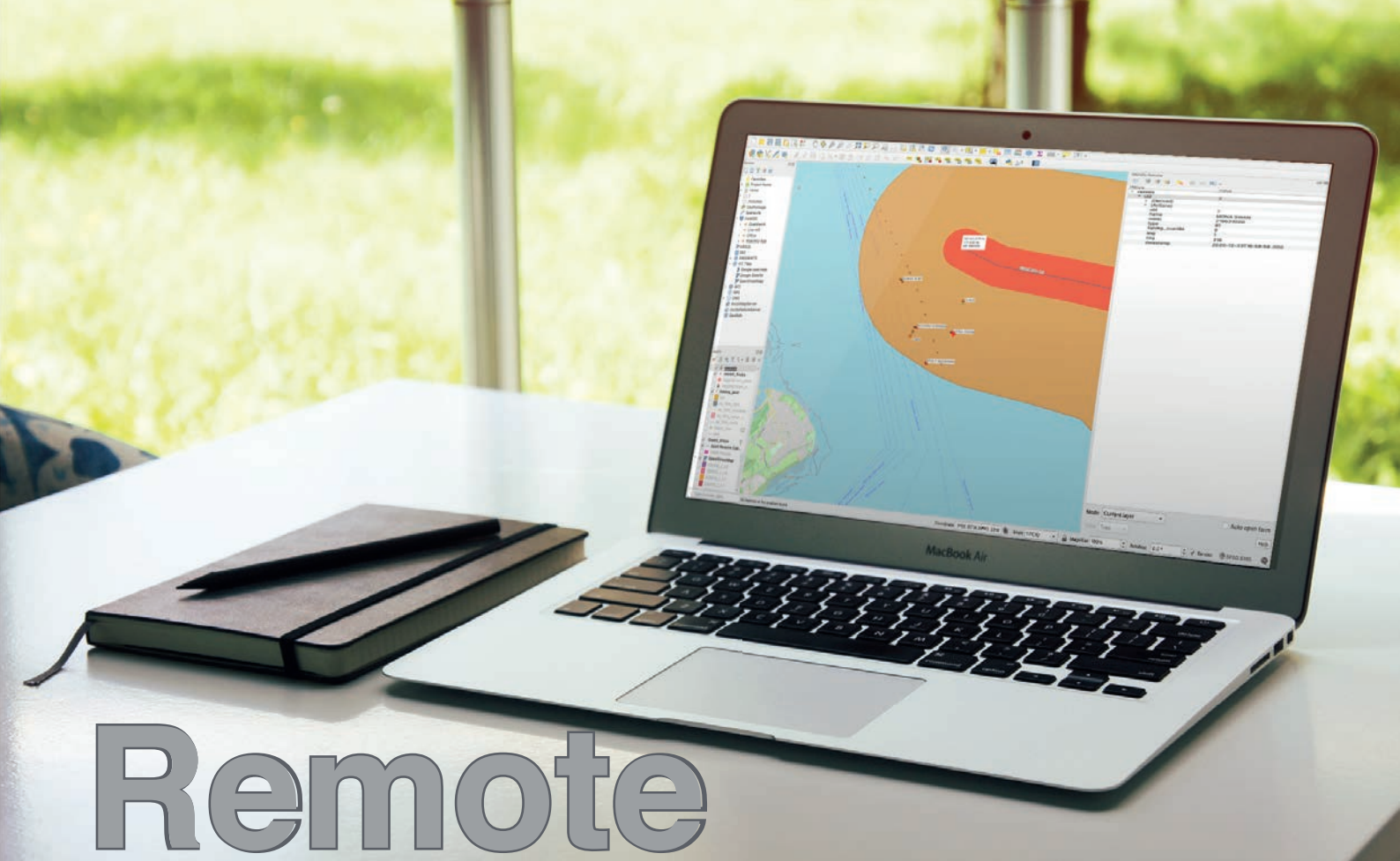


Certificates

Management of vessel and crew certification as well as critical project documents is complex logistical task, with often hundreds of documents that may expire during a project. Our team have experience in not just organising and checking certificates, but also forward planing and organising future expiry dates with project requirements.

Key documents that are required to be available at any time during the project are:

- Vessel Insurance
- Workboat / Vessel certificate
- Class and State required documents and certificates
- Asbestos free certificates
- Crew certificates including STCW 10
- Crew medical certificates
- Skipper / Captains Certificates of Competence and Certificates of Equivalence



Remote

Watchful provides specialist software and systems to allow for 24 hour services even when the vessels are in port, or sheltering for weather. Our range of remote services include:

- 24 hour remote asset monitoring
- Alert emails for critical events
- Routine reports of vessel activity
- Database of worldwide vessels and their contact details
- Online to real-time project data from any internet connected device

Our service are customised to suit our clients needs, including branding and colours used to ensue that the end reports and user experience seamlessly matches your identity and ensuring that the client experiences professional and impressive representation of data.

We ensure that data is clearly explained, in ways that no other company does. Our experience in all aspects of vessel services and maritime practices makes Watchful Ltd the perfect partner to support your business needs.



www.watchful.ltd